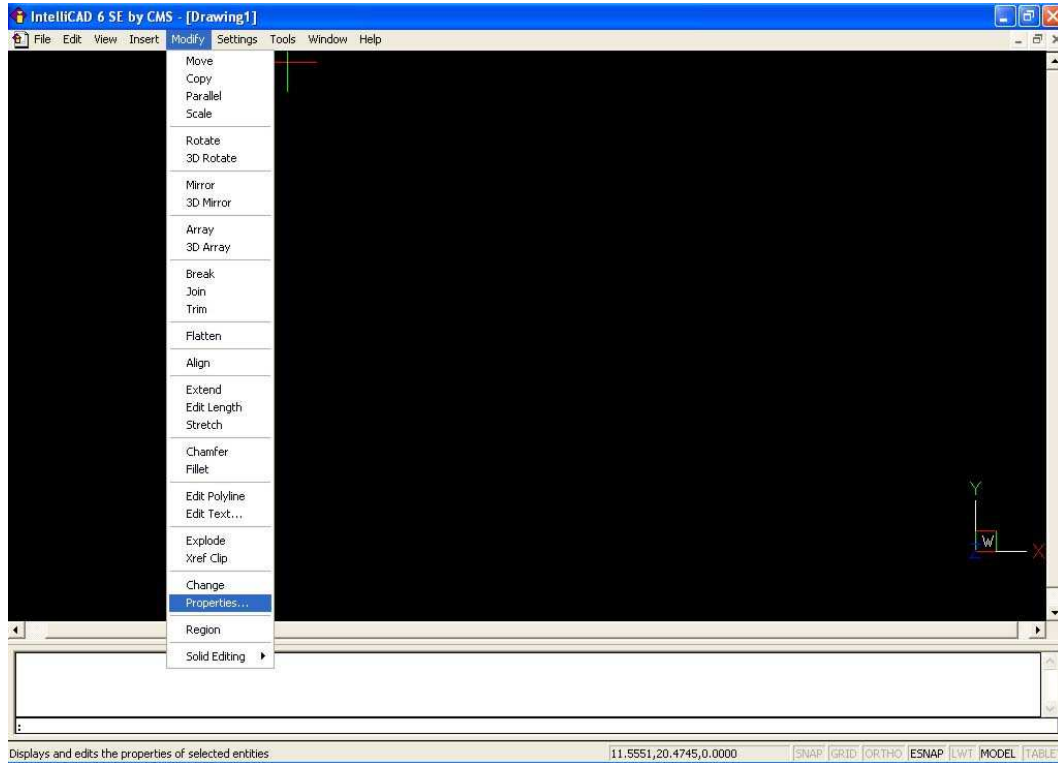


Using IntelliCAD Commands for CNC

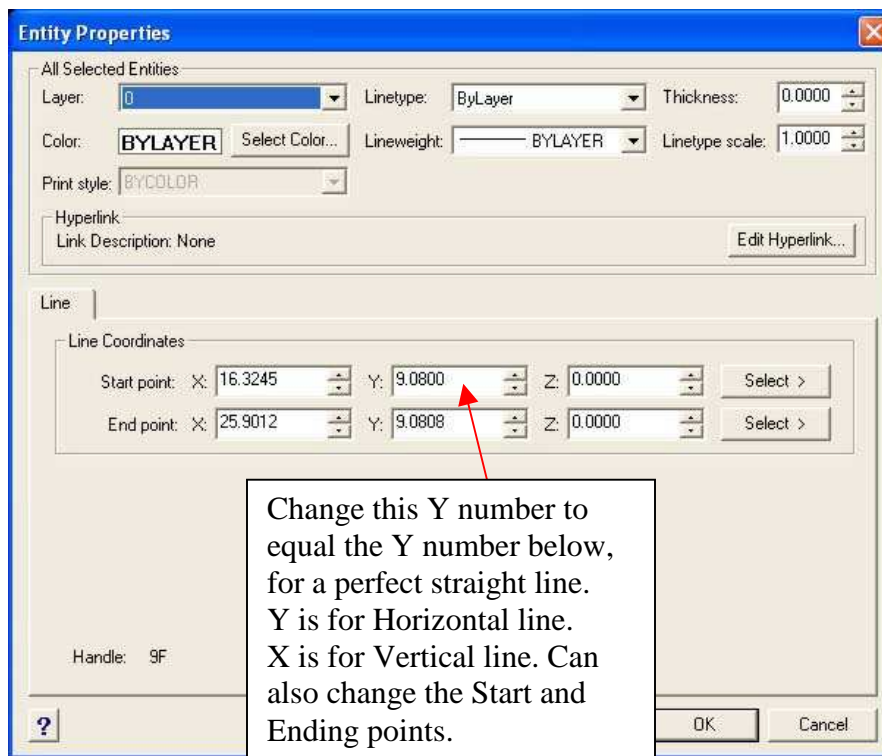
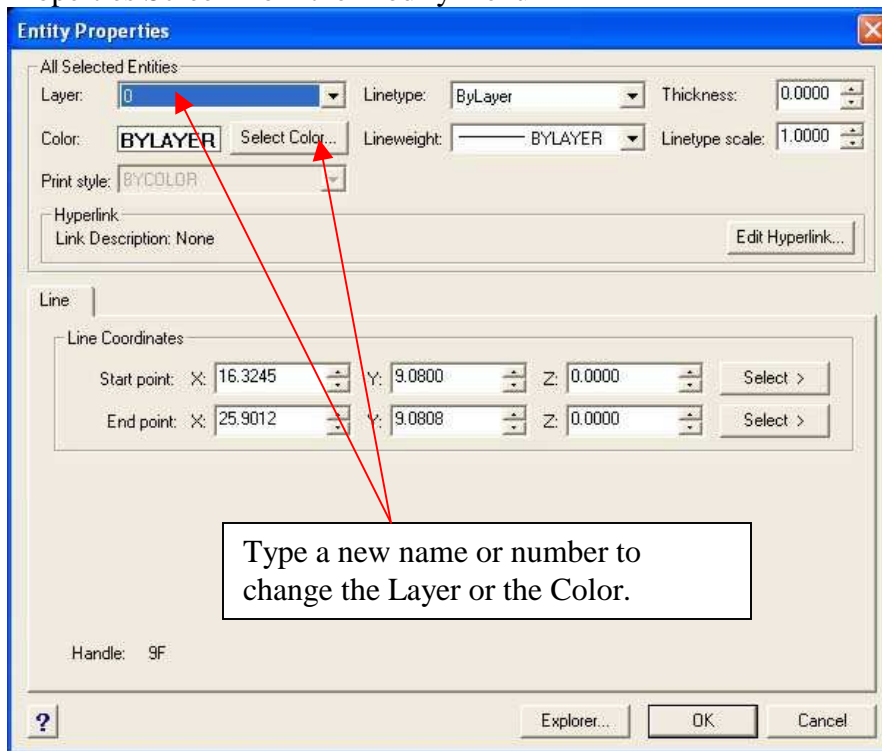
These are the CMS IntelliCAD 6 SE CAD commands to get familiar with.

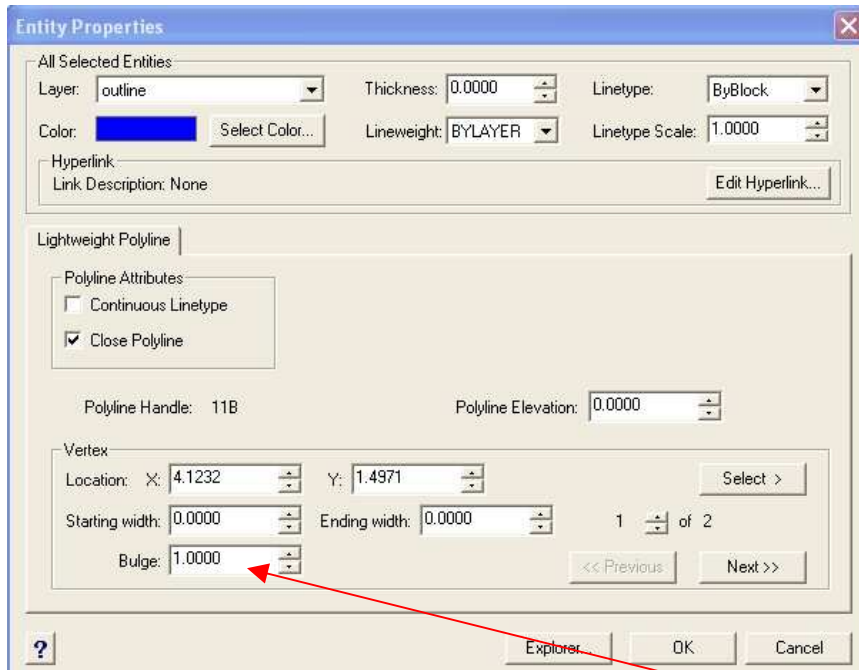
Most of the CAD commands are on this Modify menu.



1. Make a part drawing.
2. Use the **Move** command to move the part to a new XY location
3. **Explode** the drawing to change the order of machining.
4. After exploding the drawing use **Edit Polyline** to change to a Polyline, or to reverse the direction of a Line, Arc, or Circle.
5. Making more than one part, you can **Copy and Paste or Array** to a new XY location as many parts you want.
6. Use the **Parallel** command to offset half the cutter diameter to the inside or outside of the contour.
7. If some parts on the drawing are not to be machined.
8. Then click on each part of the drawing you wish to you change to a different name or number in **Properties** screen.
9. The Layer Color can be change at same time.
10. Use the **Draw Point** command to locate the XY points for drilling operations.

Properties Screen from the Modify menu





You can change the direction from CCW to CW by typing a Minus Sign here.
 Bulge 1.0000 has No Sign this is CCW (Anti- clockwise).
 Bulge -1.0000 Minus Sign this is CW (clockwise).

Then Save Drawing As

AutoCAD Release 11/12 ASCII (dxf) to convert to gcode.

