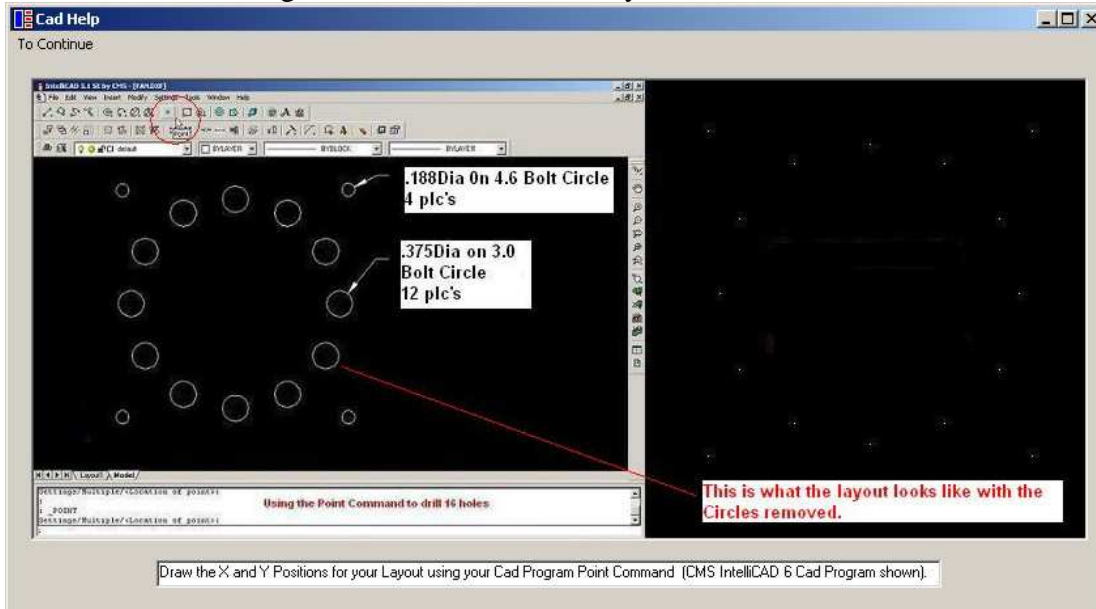
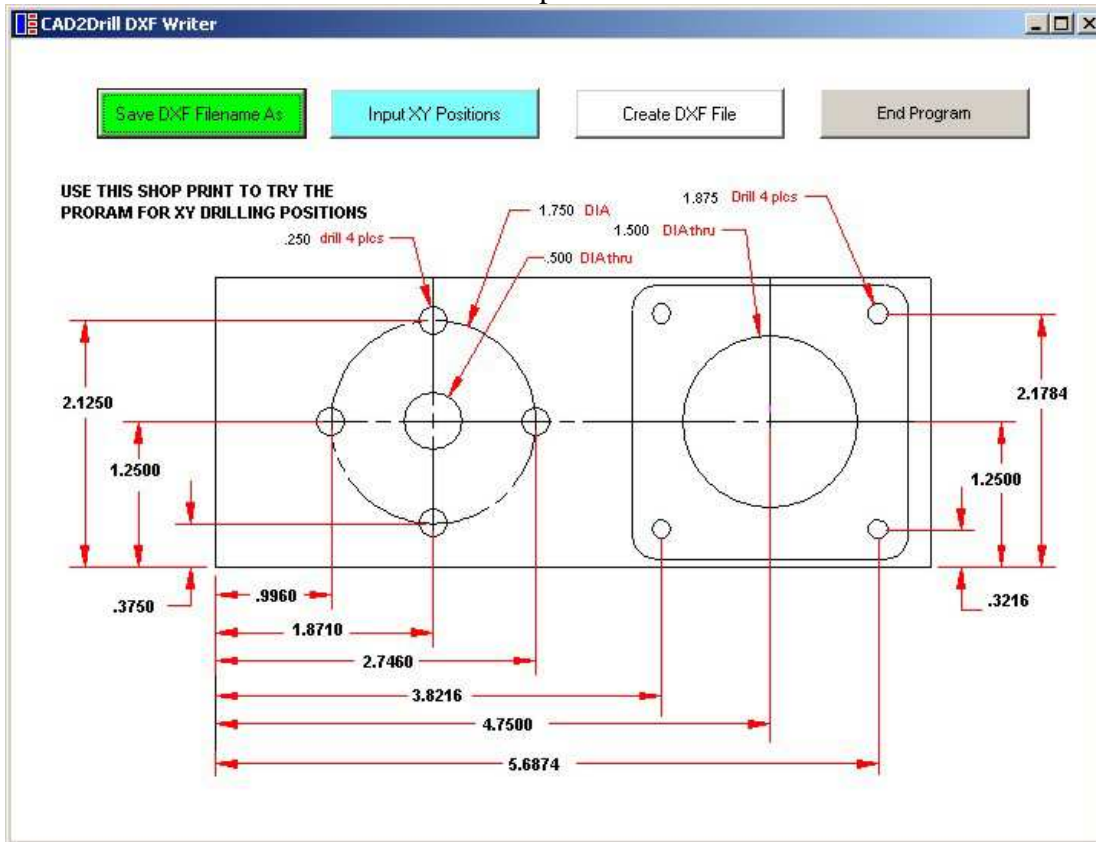


# CAD2Gcode Drilling

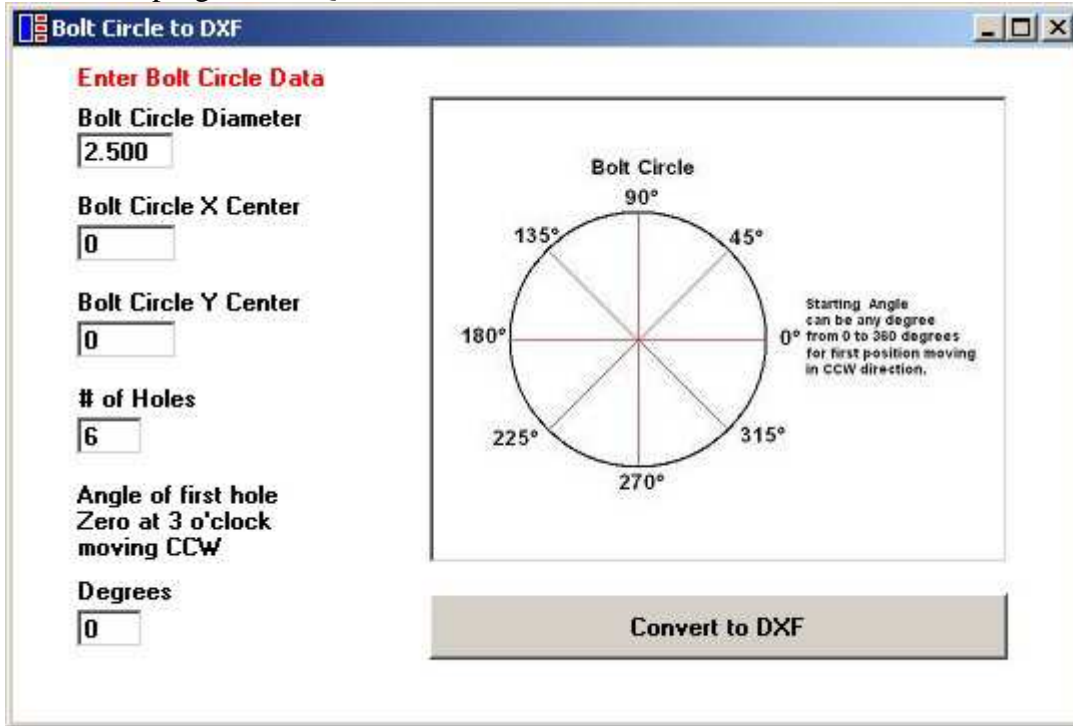
Starts with CAD using the Point Command to layout the XY Positions.



Or use the CAD2Drill DXF Writer and input XY Positions

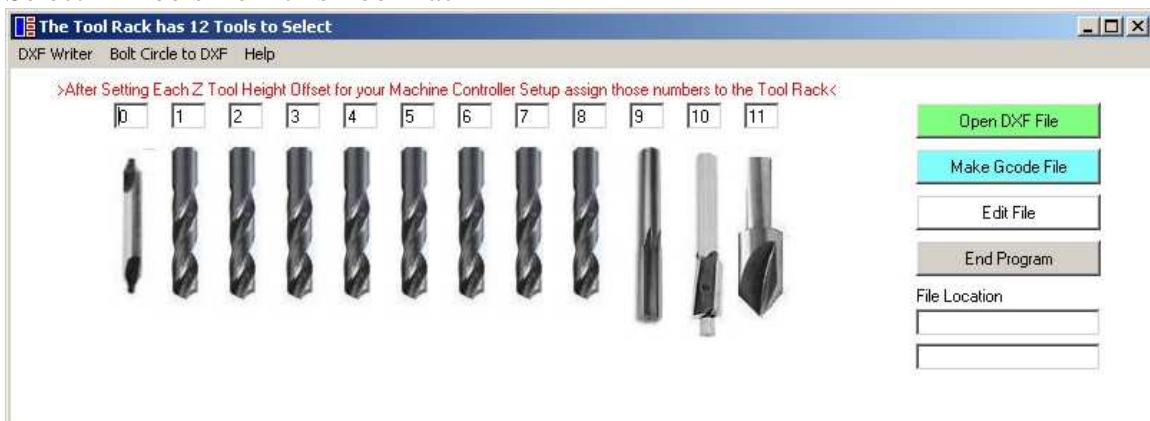


Or use this program for Quick Bolt Circle XY Positions

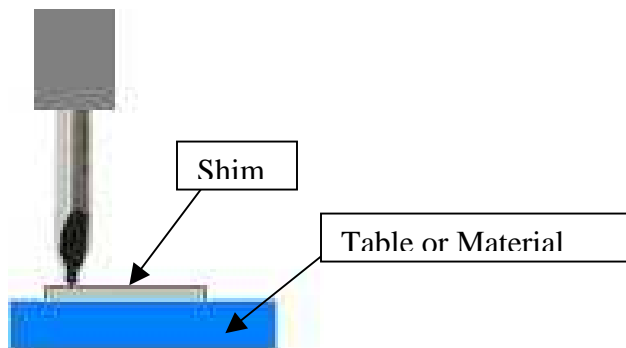
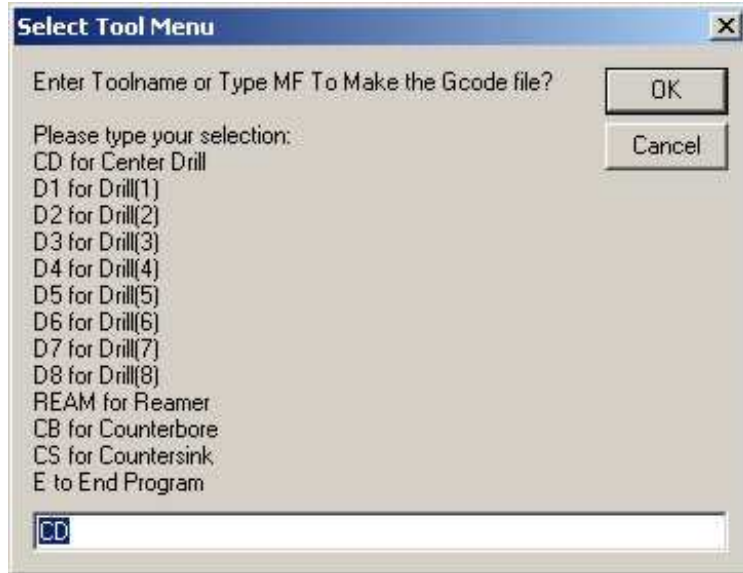


## CAD2Drill Program

Select 12 Tools from this Tool Rack



Select the Tool for the First Operation (CD) Center Drill  
Tool #0



## Tool Height Setup

Tool #0 is the reference tool.

Choose a tool that will work as a reference. I use a #3 Center drill.

Lower the Z-Axis so the tool rests on the shim plate.

Zero and reference the Axis to this position.

Then go through each of your tools, touching then against the plate.

Enter the Z offset into the table.

Now all of your tools are referenced to Tool #0, the #3 Center drill.

Then when you start a new job, use the Center drill Tool #0 lowering the Z-Axis to touch your zero Z-axis position.

Then zero and reference your axes.

# Countersink Example

